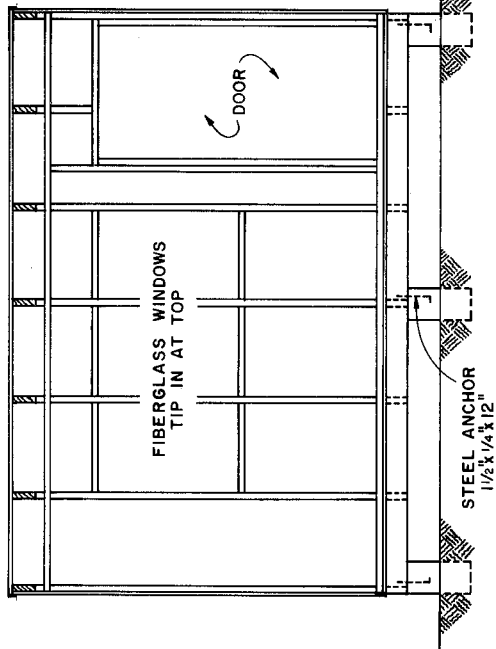
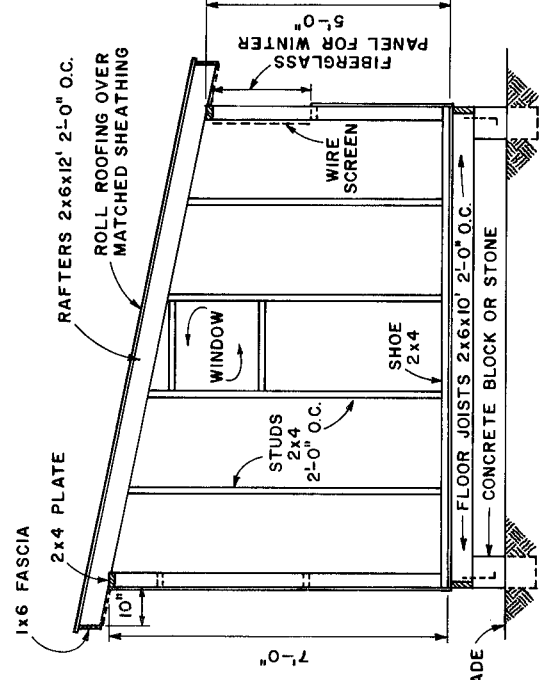


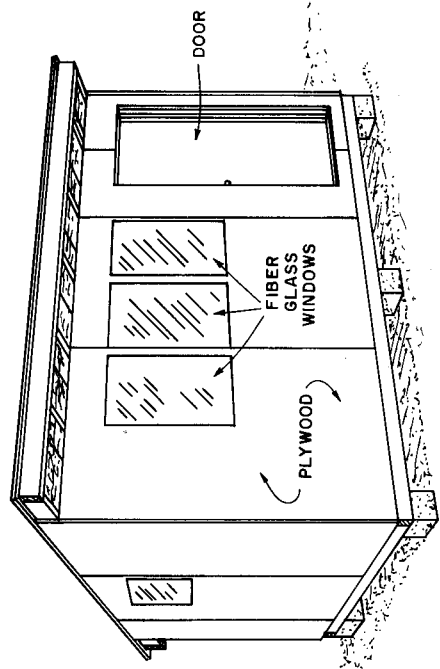
FLOOR PLAN



FRONT ELEVATION FRAMING



SIDE ELEVATION FRAMING



PERSPECTIVE

BILL OF MATERIALS

- FOUNDATION
 - 12 CONC. BLOCKS 8'x8'x16"
- FLOOR JOISTS
 - 7-PC. 2x6x10'
- FR. & REAR SILLS
 - 2-PC. 2x6x12'
- FLOOR
 - 150 BD. FT. T. & G. SHEATHING
- SHOE
 - 54 L.IN. FT. 2x4
- STUDS: REAR
 - 9-PC. 2x4x5'
- FRONT
 - 9-PC. 2x4x7'
- ENDS
 - 8-PC. 2x4x12'
- PARTITIONS
 - 2-PC. 2x4x12'
- PLATES
 - 2-PC. 2x4x12'
- ROOF
 - 175 BD. FT. T. & G. SHEATHING
- SIDING & DOORS
 - 1/2 SOS. ROLL ROOFING
- WINDOWS
 - 11 SHEETS 4'x8'x 1/2" EXT. PLYWOOD
 - 2-PC. 2x10' FIBERGLASS (FLAT)
 - 4-PC. 2x4x12'
- MISCL. FRAMING
 - 7-PC. 2x6x12'
- RAFTERS & HARDWARE
 - 6-PC. 1/2x1/4x12"
- ANCHORS-STEEL
 - 2-PC. 1x2x12'
- FASCIA
 - 1-PC. 1x2x6'
- DOOR STOPS
 - 1-PC. 1x2x6'

NOTE: CONSULT LOCAL HEALTH AND BUILDING CODE AUTHORITIES BEFORE STARTING CONSTRUCTION



COOPERATIVE EXTENSION WORK IN AGRICULTURE AND HOME ECONOMICS
STATE OF TENNESSEE
UNIVERSITY OF TENNESSEE
AGRICULTURAL ENGINEERING DEPARTMENT
UNIVERSITY OF TENNESSEE
UNITED STATES DEPARTMENT OF AGRICULTURE COOPERATING

POULTRY HOUSE 10'x12'
N. H. '76 6248 SHEET 1 OF 1