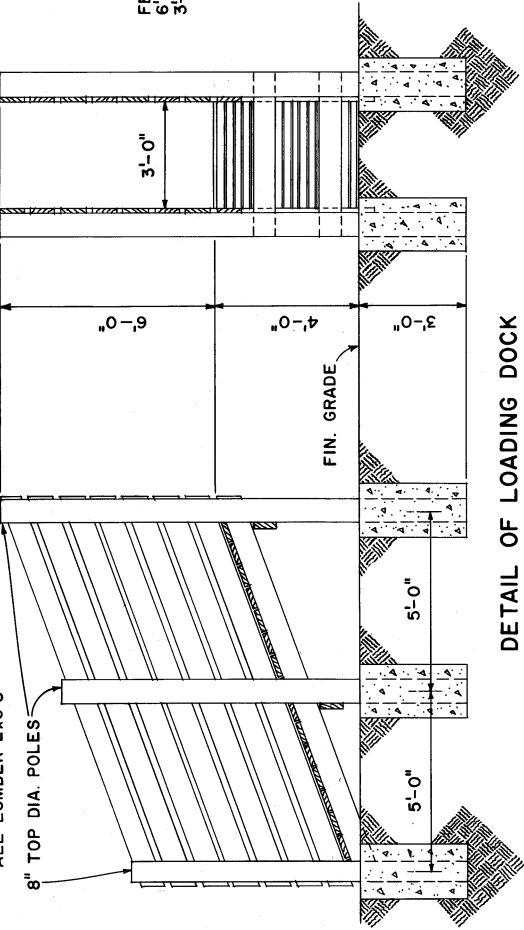


NOTE:  
ALL LUMBER 2x8'S

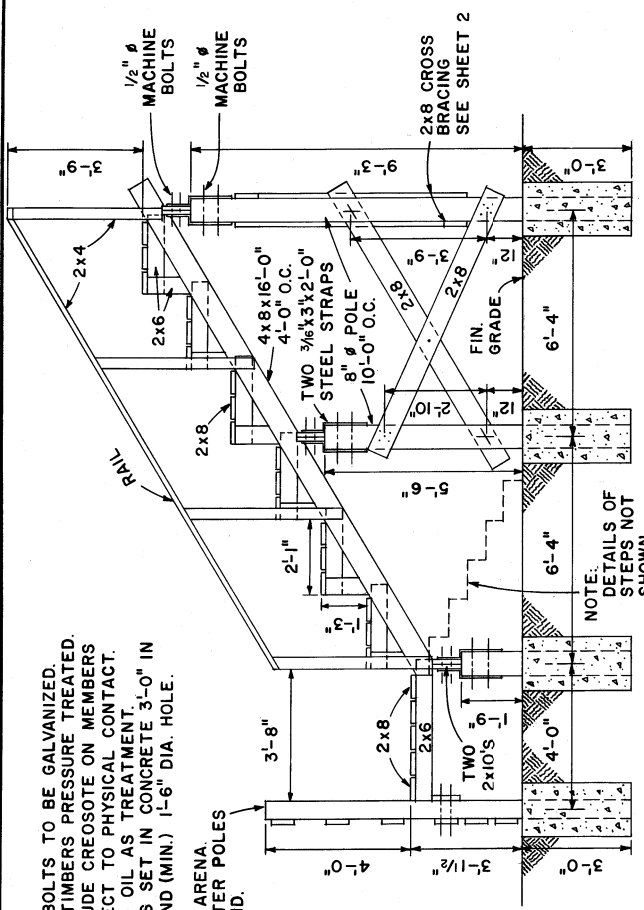


DETAIL OF LOADING DOCK

NOTES:

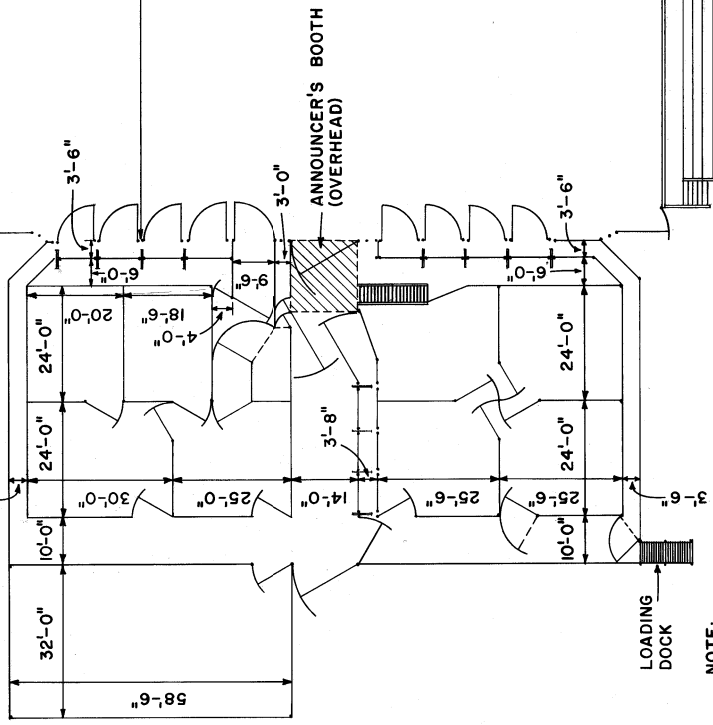
ALL BOLTS TO BE GALVANIZED.  
ALL TIMBERS PRESSURE TREATED.  
EXCLUDE CREOSOTE ON MEMBERS  
SUBJECT TO PHYSICAL CONTACT.  
AVOID OIL AS TREATMENT.  
POLES SET IN CONCRETE 3'-0" IN  
GROUND (MIN.) 1'-6" DIA. HOLE.

FENCE ALONG ARENA  
6" TOP DIAMETER POLES  
3'-0" IN GROUND.



GRANDSTAND DETAILS

NOTE:  
DETAILS OF  
STEPS NOT  
SHOWN.



ARENA

PLAN

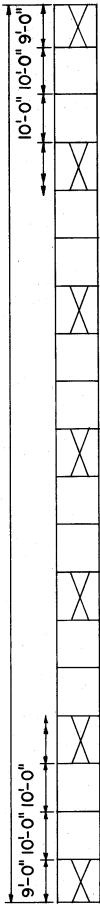
COOPERATIVE EXTENSION WORK IN  
AGRICULTURE AND HOME ECONOMICS  
STATE OF TENNESSEE  
UNIVERSITY OF TENNESSEE  
UNITED STATES DEPARTMENT OF AGRICULTURE COOPERATING

RODEO ARENA  
MISS. & TEX. 74 6184 SHEET 1 OF 3

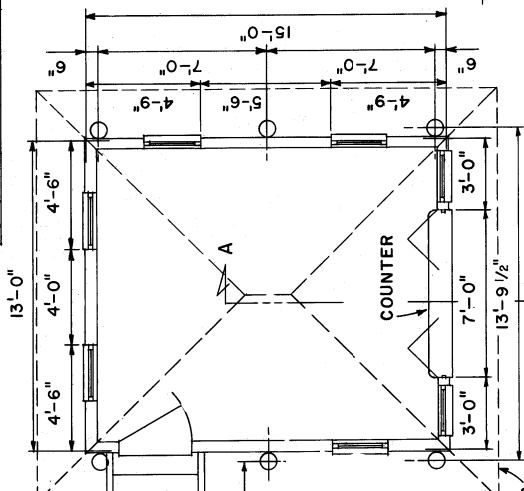
ADOPTED FROM TEXAS A&M PLAN NO. 500 & MISS. PLAN NO. 6015 A

NOTE:  
CONSULT LOCAL CODES AND BUILDING  
AUTHORITIES BEFORE STARTING  
CONSTRUCTION.

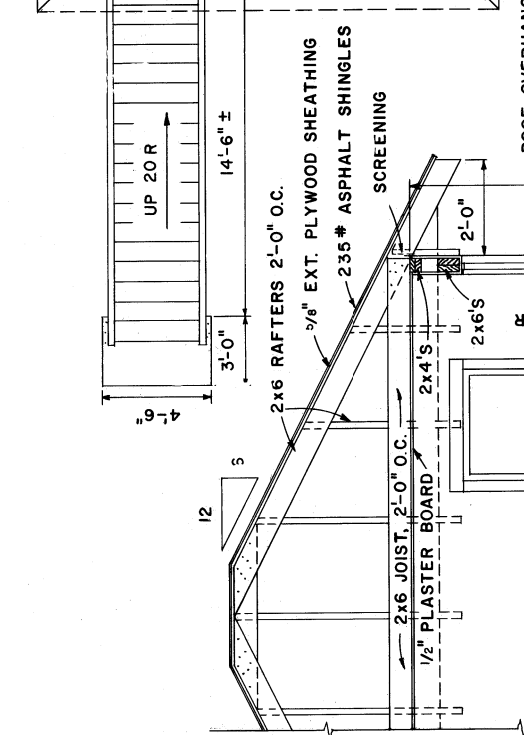
186'-0"



### SCHEMATIC OF BRACING REAR OF GRANDSTAND



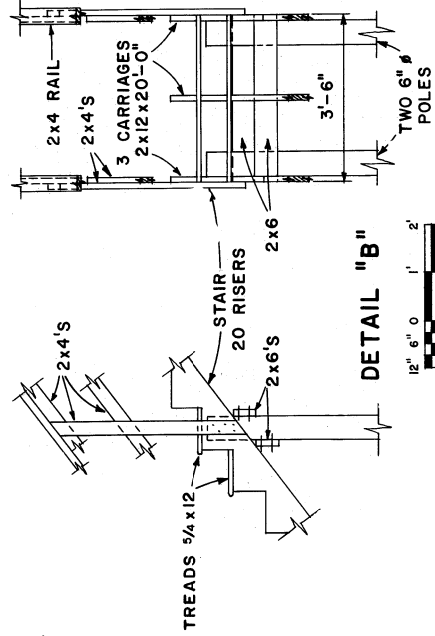
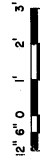
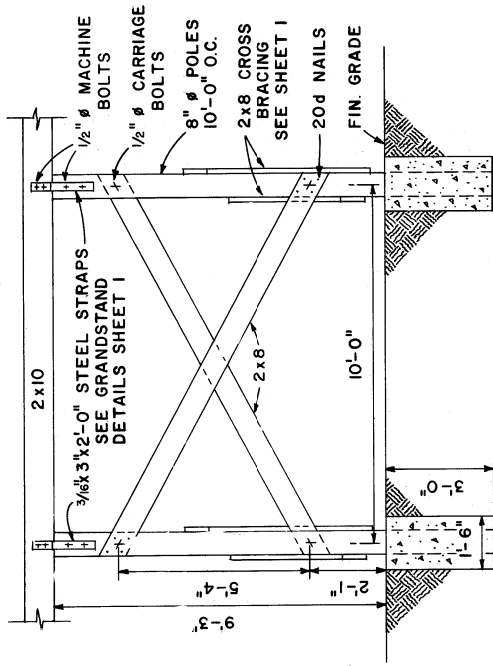
### PLAN



### SECTION A-A



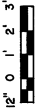
### DETAIL OF BRACING



### DETAIL "B"



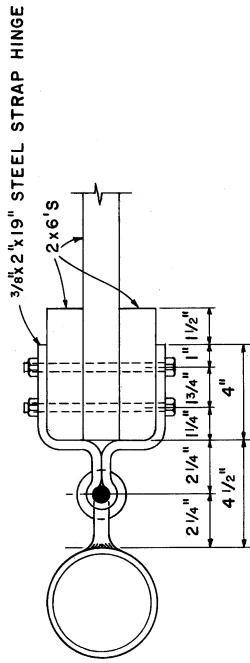
### ELEVATION



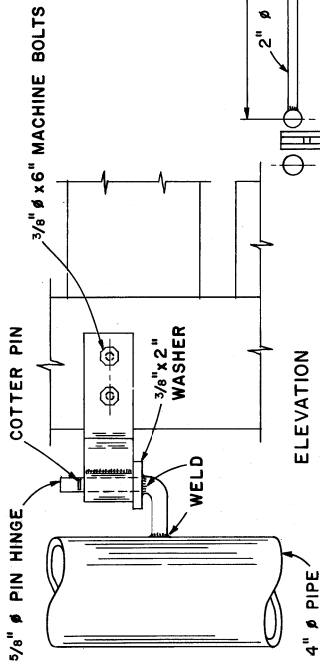
COOPERATIVE EXTENSION WORK IN  
 AGRICULTURE AND HOME ECONOMICS  
 STATE OF TENNESSEE  
 UNIVERSITY OF TENNESSEE  
 UNITED STATES DEPARTMENT OF AGRICULTURE COOPERATING

RODEO ARENA

MISS. & TEX. 7-4 6184 SHEET 2 OF 3

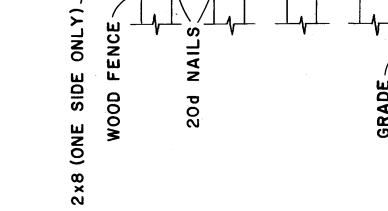
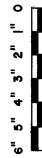


PLAN



ELEVATION

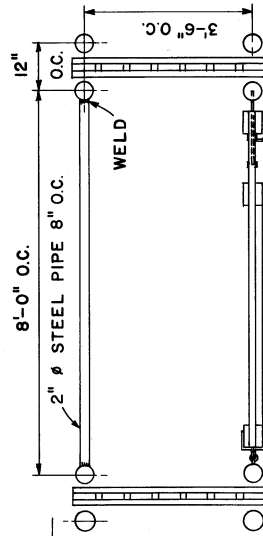
DETAIL "A"



WOOD FENCE

20d NAILS

GRADE



8'-0" O.C.

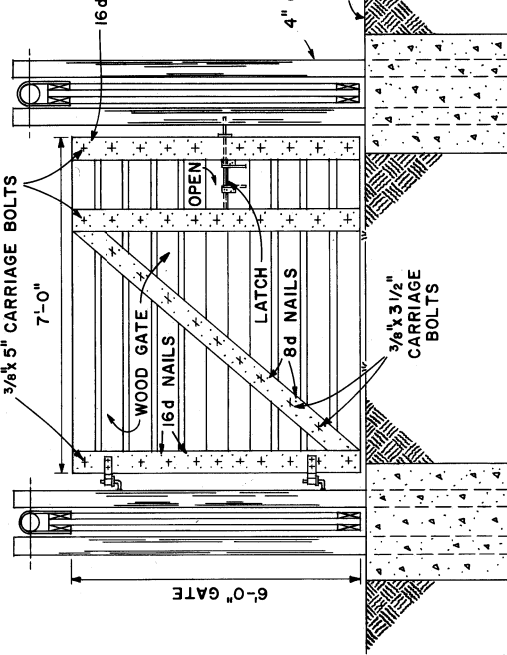
12" O.C.

WELD

NOTE: ALL LUMBER 2x6'S

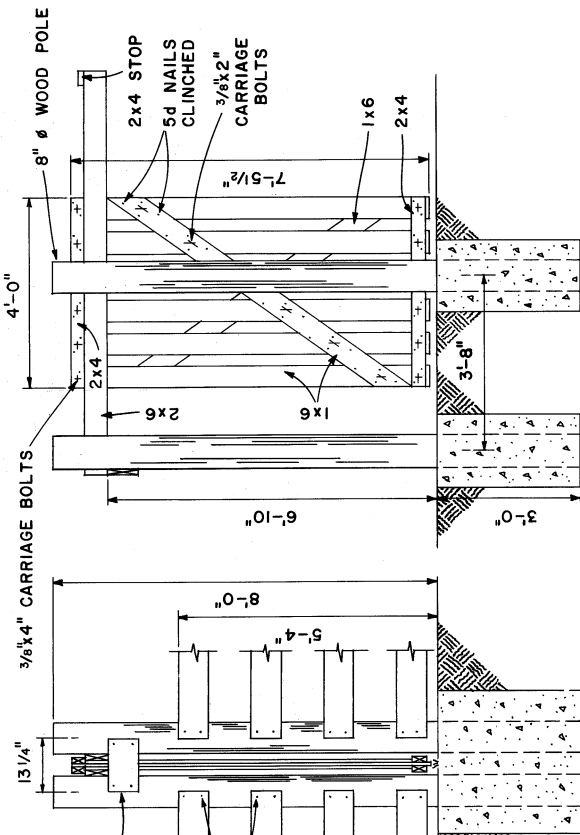
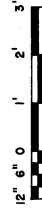
PLAN

HINGE (SEE DETAIL A)



ELEVATION

DETAILS OF TYPICAL BRONC CHUTE



ELEVATION

SECTION

DETAILS OF CENTER CHUTE GATES



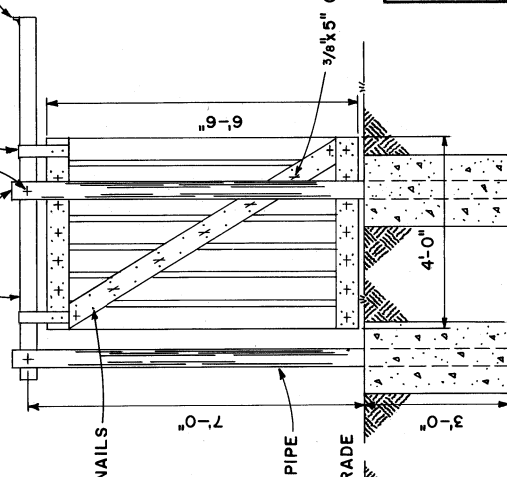
NOTE: GATE SLIDES HORIZONTALLY ON TOP OF 2x6'S.

NOTE: GATE SLIDES HORIZONTALLY ALONG TOP PIPE.

5/8x18" MACHINE BOLTS

1/4x3" FLAT BAR (STRAP)

1/2x1 1/2" STEEL STOP (WELD)



SECTION

DETAILS OF TYPICAL BRONC CHUTE