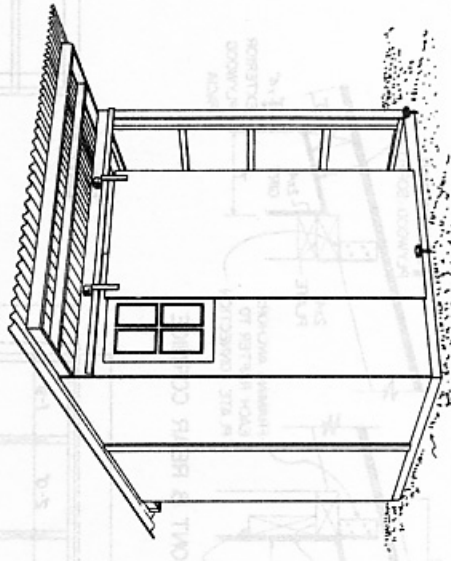
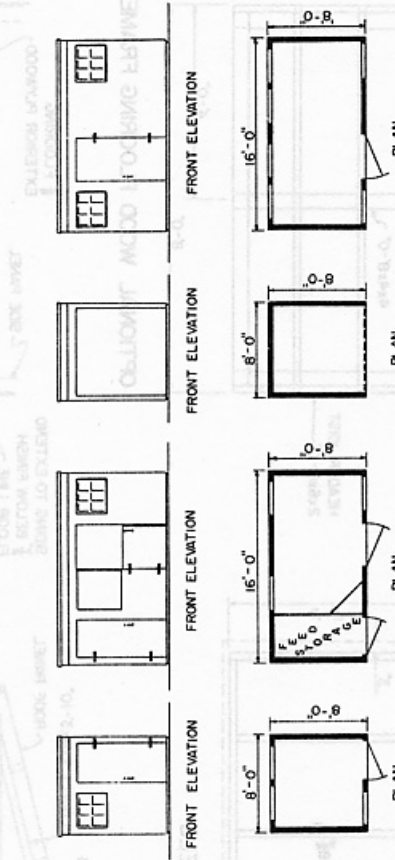


BILL OF MATERIALS

USES OF UTILITY SHED

ITEM	SIZE	PCS.	AMOUNT
CONCRETE FLOOR	8'-0" x 8'-0" x 4"	1	1 CU. YD
CONCRETE	3/8" x 6"	14	14 EA.
ANCHOR BOLTS			
OPTIONAL WOOD FLOOR			
JOISTS	2x4x8'-0"	5	27 F.B.M.
JOIST HEADER	2x6x8'-0"	16	16 F.B.M.
END JOIST & SKIDS	4x4x8'-0"	5	54 F.B.M.
FLOORING, EXTERIOR PLYWOOD	3/8" x 4'-0" x 8'-0"	2	2 SHEETS
EYE BOLTS	3/8" x 6"	2	2 EA.
NAILS, COMMON	1/2" x 6"	16d	1 3/4 LBS.
NAILS, GALVANIZED	6d	6d	3/4 LB.
2 REAR PANELS			
STUDS	2x4x6'-0"	4	16 F.B.M.
SILL, GIRTS, & PLATE	2x4x4'-0"	10	27 F.B.M.
SASH BLOCKING	2x4x2'-0"	2	2 F.B.M.
SIDING, EXTERIOR PLYWOOD	3/8" x 4'-0" x 8'-0"	2	2 SHEETS
BATTEN, EXTERIOR PLYWOOD	3/8" x 3"x 6'-0"	1	1 STRIP
WINDOW	1'-8" x 3'-0"	1	1 EA.
NAILS, COMMON	16d	16d	1 1/4 LBS.
NAILS, GALVANIZED	6d	6d	3/4 LB.
4 SIDE PANELS			
GIRTS & SILL	2x4x4'-0"	10	27 F.B.M.
FRONT & CENTER STUDS	2x4x8'-0"	6	32 F.B.M.
REAR STUDS	2x4x6'-0"	2	8 F.B.M.
SIDING, EXTERIOR PLYWOOD	3/8" x 4'-0" x 8'-0"	4	4 SHEETS
BATTENS, EXTERIOR PLYWOOD	3/8" x 3"x 6'-0"	2	2 STRIPS
RAFTER TRIM, FRONT	3/8" x 4"x 2'-8"	2	2 STRIPS
RAFTER TRIM, REAR	3/8" x 4"x 8"	2	2 STRIPS
RAILS, COMMON	16d	16d	2 1/2 LBS.
RAILS, GALVANIZED	6d	6d	2 LBS.
1 FRONT PANEL			
STUDS	2x4x8'-0"	3	16 F.B.M.
SILL, GIRTS, & PLATE	2x4x4'-0"	5	14 F.B.M.
HEADER	2x6x4'-0"	1	3 F.B.M.
SASH BLOCKING	2x4x4'-0"	1	3 F.B.M.
SIDING, EXTERIOR PLYWOOD	3/8" x 4'-0" x 8'-0"	1	1 SHEET
WINDOW	2'-5" x 3'-0"	1	1 EA.
NAILS, COMMON	16d	16d	1 LB.
NAILS, GALVANIZED	6d	6d	1/2 LB.
1 FRONT PANEL - SLIDING DOOR			
STUDS	2x4x8'-0"	3	16 F.B.M.
PLATE	2x4x4'-0"	1	3 F.B.M.
HEADER	2x6x4'-0"	1	4 F.B.M.
SIDING, EXTERIOR PLYWOOD	3/8" x 2"x 7'-5"	1	1 STRIP
	3/8" x 6"x 7'-5"	1	1 STRIP
	3/8" x 7"x 4'-0"	1	1 STRIP
	3/8" x 4'-0" x 8'-0"	1	1 SHEET
DOOR, EXTERIOR PLYWOOD	8'-0" LONG	1	1 EA.
SLIDING DOOR TRACK	3" DIA WHEEL	2	2 EA.
SLIDING DOOR TROLLEYS	2" DIA WHEEL	2	2 EA.
DOOR STAY ROLLERS	16d	16d	1/2 LB.
NAILS, COMMON	6d	6d	1/4 LB.
NAILS, GALVANIZED			
2 ROOF PANELS			
RAFTERS	2x4x12'-0"	4	32 F.B.M.
GIRTS	2x4x4'-0"	14	38 F.B.M.
FACIA, FRONT	3/8" x 4"x 8'-0"	1	1 SHEET
FACIA, REAR	3/8" x 4"x 8'-0"	1	1 SHEET
SOFFIT, FRONT	3/8" x 2'-7" x 8'-0"	1	1 SHEET
SOFFIT, REAR	3/8" x 7"x 8'-0"	1	1/2 LBS.
NAILS, COMMON	6d	6d	3/4 LBS.
NAILS, GALVANIZED	2" SCREW SHANK	100	100 EA.
NAILS, ALUMINUM	BV CRIMP	2	2 SHEETS
ROOFING, ALUMINUM	.024" x 50" x 12'-0"	4	4 EA.
FRAMING ANCHORS (4X)	18 GAUGE	4	4 EA.
FRAMING ANCHORS (4L)	18 GAUGE	4	4 EA.

NOTE
BATTENS, RAFTER TRIM, SOFFITS, & FACIAS TO BE CUT FROM 1 SHEET OF 3/8" x 4'-0" x 8'-0" EXTERIOR PLYWOOD & WASTE FROM THE SIDING USED ON THE SIDE & REAR PANELS



PERSPECTIVE

UNIV. OF CONN. PLAN No. 302

COOPERATIVE EXTENSION WORK IN AGRICULTURE AND HOME ECONOMICS STATE OF TENNESSEE

UNIVERSITY OF TENNESSEE AND UNITED STATES DEPARTMENT OF AGRICULTURE COOPERATING

UTILITY SHED	CONN. '70	6100	SHEET 1 OF 2
--------------	-----------	------	--------------

